

TECHNICAL HIGHLIGHTS



Machined Mast Profiles

Extra Strong and Full Visibility Fork Carriage

Exclusive Combination Roller System

Oversized Components and Low Working Pressure



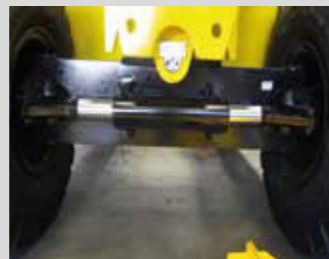
Extra Strong and Full Visibility Mast Construction



Unique Pad Side Shift System



Heavy Duty Hydraulic Oil and Brake Cooling System



Steering Axle



Engine Compartment Bottom Protection



Engineer-Friendly Electrics



Electronic Master Monitor

SPECIAL APPLICATIONS



Handling of Steel Rods by Magnet

Hot Billets Handling

Twin Coil Ram System

Set up for Handling by Magnet

"RoRo" Extra Low Profile

CABIN



Luxury Driver and Trainer Seat

Extra Ergonomic and Luxury Cabin Environment

**EXPERIENCE
MAKES THE
DIFFERENCE**



FANTUZZI TEAM MATERIAL HANDLING S.p.A.

Via G. Galilei, 13 - 42041 Brescello (RE) Italy
Ph. +39 0522 480625 - Fax +39 0522 480160 - info@ftmh.it - www.ftmh.it
P. Iva/CF 02618470351 - VAT IT02618470351

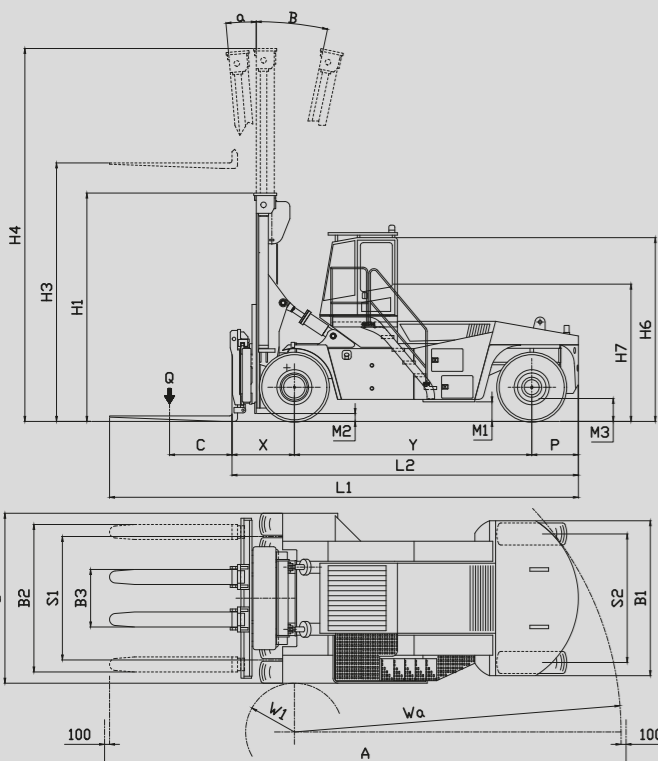
FTMH

FORKLIFTS



EXPERIENCE MAKES THE DIFFERENCE





OPTIONAL EQUIPMENTS

- Alternative make of diesel engines (EU Stage IIIA as well)
- Different lifting mast heights, duplex, triplex, freelif (technical information and measures are provided on request)
- Forks in different sections and length
- Ram for coils, log holding clamps, fixed and telescopic frame and any other equipment studied and designed to measure for the client
- Magnet attachments for steel handling
- Extra hydraulic functions and quick connections
- Hydraulic rear suspensions
- Customized colour schemes
- Solid or in special version and design tyres
- Fire extinguisher or Fire fighting system
- Auto-Lube system
- Arctic packages



| MANUFACTURER | | | | FTMH | | | | | | | | | | | | | | | |
|--------------|------------------------------|---|---|--|------------------|------------------|------------------|------------------|------------------|------------------|------------------|------------------------|------------------|------------------|------------------|-------------------|-------------|--|--|
| MODEL | | | | FTF 15-12 | FTF 16-12 | FTF 18-12 | FTF 20-12 | FTF 25-9 | FTF 26-12 | FTF 28-12 | FTF 33-12 | FTF 36-12 | FTF 42-12 | FTF 45-12 | FTF 48-12 | FTF 52-12 | | | |
| 1.1-1.4 | Lifting Data | Q | Lifting capacity | kg | 15000 | 16000 | 18000 | 20000 | 25000 | 26000 | 28000 | 33000 | 36000 | 42000 | 45000 | 48000 | 52000 | | |
| | | C | Load centre | mm | 1225 | 1225 | 1225 | 1225 | 900 | 1225 | 1225 | 1225 | 1225 | 1225 | 1225 | 1225 | 1225 | | |
| | | X | Load distance, centre of drive axle to fork | mm | 1000 | 1000 | 1000 | 1000 | 1050 | 1050 | 1050 | 1150 | 1150 | 1300 | 1300 | 1300 | 1300 | | |
| | | Y | Wheelbase | mm | 3500 | 3500 | 4000 | 4000 | 4000 | 4500 | 4750 | 4750 | 5000 | 5500 | 5500 | 6000 | 6000 | | |
| 2.1-2.3 | Weights | Service weight | kg | 25100 | 25900 | 26500 | 28000 | 34800 | 35800 | 38500 | 45000 | 47000 | 55500 | 59000 | 61000 | 63000 | | | |
| | | Axle pressure, laden front/rear | kg | 36200/3900 | 37850/4050 | 39000/3500 | 43100/4900 | 54500/5300 | 55700/6100 | 56700/9800 | 71400/6600 | 76000/7000 | 89200/8300 | 93700/10300 | 98700/10300 | 103800/11200 | | | |
| | | Axle pressure, unladen front/rear | kg | 11700/13400 | 11700/14200 | 12000/14500 | 12000/16000 | 17300/17500 | 17800/18000 | 19000/19500 | 22000/23000 | 23000/24000 | 27500/28000 | 28000/31000 | 29500/31500 | 29500/33500 | | | |
| 3.1-3.7 | Wheels | Tire type | | Pneumatic | | | | | | | | | | | | | | | |
| | | Tire dimensions, front/rear (ply rating) | Inch | 12,00-20 (PR 24) | 12,00-20 (PR 28) | 12,00-24 (PR 20) | 12,00-24 (PR 20) | 14,00-24 (PR 32) | 14,00-24 (PR 32) | 14,00-24 (PR 32) | 16,00-25 (PR 28) | 16,00-25 (PR 28) | 18,00-25 (PR 40) | 18,00-25 (PR 40) | 18,00-25 (PR 40) | 18,00-33 (PR 36) | | | |
| | | Rim dimensions | Inch | 8.5,00-20 | 8.5,00-20 | 8.5,00-24 | 8.5,00-24 | 10,00-24 | 10,00-24 | 10,00-24 | 12,00-25 | 12,00-25 | 13,00-25 | 13,00-25 | 13,00-25 | 13,00-33 | | | |
| | | Tire pressure, front/rear | bar | 10 | 10 | 10 | 10 | 10 | 10 | 10 | 10 | 10 | 10 | 10 | 10 | | | | |
| | | Ground pressure | kg/cm² | 9,5 | 9,5 | 9,5 | 9,5 | 9,5 | 9,5 | 9,5 | 9,5 | 9,5 | 9,5 | 9,5 | 9,5 | | | | |
| | | Number of wheels, front/rear (X = driven) | | 4x / 2 | 4x / 2 | 4x / 2 | 4x / 2 | 4x / 2 | 4x / 2 | 4x / 2 | 4x / 2 | 4x / 2 | 4x / 2 | 4x / 2 | 4x / 2 | 4x / 2 | | | |
| | | Track width, front/rear | mm | 1890/2000 | 1890/2000 | 1890/2000 | 1890/2000 | 2160/2100 | 2160/2100 | 2160/2100 | 2655/2400 | 2655/2400 | 2970/2580 | 2970/2580 | 2970/2580 | 3370/2580 | | | |
| | | Mast tilt, forward/backward | ° | 6/12 | 6/12 | 6/12 | 6/12 | 6/12 | 5/10 | 5/10 | 5/12 | 5/12 | 5/12 | 5/12 | 5/12 | 5/12 | | | |
| 4.1-4.9 | Dimensions | H3 | Lifting height | mm | 4000 | 4000 | 4000 | 4000 | 4000 | 4000 | 4000 | 4000 | 5100 | 5100 | 5100 | 5100 | | | |
| | | H1/H4 | Mast height, retracted/extended | mm | 3590/5590 | 3590/5590 | 3640/5640 | 3640/5640 | 4300/6300 | 4300/6300 | 4300/6300 | 4450/6450 | 4450/6450 | 5050/7500 | 5250/7700 | 5500/8000 | | | |
| | | H6/H7 | Cabin height / Seat height | mm | 3300/2500 | 3300/2500 | 3350/2550 | 3350/2550 | 3500/2400 | 3500/2400 | 3500/2400 | 3500/2470 | 3500/2470 | 4600/3500 | 4600/3500 | 4600/3500 | | | |
| | | L1/L2 | Overall length (with/without forks) | mm | 7890/5440 | 7890/5440 | 8300/5850 | 8300/5850 | 8050/5850 | 8550/6350 | 8800/6600 | 9000/6550 | 9250/6800 | 10300/7850 | 10300/7850 | 10800/8350 | | | |
| | | B/B1 | Overall width (front/rear) | mm | 2500/2400 | 2500/2400 | 2500/240 | 2500/240 | 2980/2500 | 2980/2500 | 2980/2500 | 3600/3050 | 3600/3050 | 4200/3100 | 4200/3100 | 4500/3100 | | | |
| | | P | Rear Overhang | mm | 840 | 840 | 840 | 840 | 880 | 880 | 880 | 900 | 900 | 1050 | 1050 | 1050 | | | |
| | | Fork carriage type | ner | Hydraulic-powered side shift & fork positioner | | | | | | | | | | | | | | | |
| | | Fork dimensions (width/thickness/length) | mm | 220/100/2450 | 220/100/2450 | 220/100/2450 | 250/110/2450 | 250/110/2150 | 250/110/2450 | 270/110/2450 | 300/110/2450 | 300/115/2450 | 300/135/2450 | 300/150/2450 | 300/150/2450 | 300/150/2450 | | | |
| | | B3/B2 | Fork positioning (min/max - outside) | mm | 650/2270 | 650/2270 | 650/2270 | 650/2270 | 1000/2800 | 1000/2800 | 1000/2800 | 1150/2950 | 1150/2950 | 1350/3150 | 1350/3150 | 1350/3150 | | | |
| | | Fork sideshift | mm | +/-410 | +/-410 | +/-410 | +/-410 | +/- 450 | +/- 450 | +/- 450 | +/- 450 | +/- 450 | +/- 450 | +/- 450 | +/- 450 | +/- 450 | | | |
| | | M1-2-3 | Ground clearance (mast/middle/steer axle) | mm | 230/350/390 | 230/350/390 | 280/400/430 | 280/400/430 | 300/500/520 | 300/500/520 | 300/500/520 | 330/510/520 | 330/510/520 | 350/470/500 | 350/470/500 | 350/470/500 | 350/570/500 | | |
| A | Aisle width | mm | 8400 | 8400 | 8900 | 8900 | 9350 | 9800 | 10100 | 10600 | 10850 | 11500 | 11500 | 12000 | 12000 | | | | |
| W1-Wa | Turning radius (inner/outer) | mm | 900/4750 | 900/4750 | 900/5250 | 900/5250 | 900/5650 | 900/6100 | 900/6400 | 900/6800 | 900/7050 | 1050/7550 | 1050/7550 | 1050/8050 | 1050/8050 | | | | |
| 5.1-5.5 | Performance data | Travel speed, laden/unladen | Km/h | 24 / 25 | 24 / 25 | 24 / 25 | 24 / 25 | 24 / 25 | 24 / 25 | 24 / 25 | 24 / 25 | 24 / 25 | 23/24 | 23/24 | 22/24 | 23/26 | | | |
| | | Lift speed, laden/unladen | m/s | 0,33-0,36 | 0,33-0,36 | 0,33-0,36 | 0,33-0,36 | 0,32-0,34 | 0,32-0,34 | 0,32-0,34 | 0,30-0,32 | 0,30-0,32 | 0,21/0,26 | 0,21/0,26 | 0,21/0,26 | 0,21/0,26 | | | |
| | | Lowering speed, laden/unladen | m/s | 0,26-0,25 | 0,26-0,25 | 0,26-0,25 | 0,26-0,25 | 0,26-0,25 | 0,26-0,25 | 0,26-0,25 | 0,25-0,21 | 0,25-0,21 | 0,30/0,25 | 0,30/0,25 | 0,30/0,25 | 0,30/0,25 | | | |
| | | Drawbar pull, laden/unladen | kN | 150 | 150 | 150 | 150 | 160 | 160 | 160 | 210 | 210 | 300 | 300 | 300 | 300 | | | |
| | | Gradeability, laden/unladen | % | 24/26 | 24/26 | 24/26 | 24/26 | 28/30 | 28/30 | 28/30 | 28/30 | 28/30 | 28/30 | 28/30 | 28/30 | 28/30 | | | |
| 6.1-6.17 | Driveline | Engine make, model | | VOLVO TAD 572VE | | | | VOLVO TAD 870 VE | | | | VOLVO TAD 871 VE | | | | VOLVO TAD 1171 VE | | | |
| | | Emission approval, EU/US | | St 4 / Tier 4F | | | | | | | | | | | | | | | |
| | | Engine power @ max. speed | kW/rpm | 160 / 218 @ 2200 | 160 / 218 @ 2200 | 910 @ 1450 | | | | 185 / 252 @ 2200 | | | | 265 / 360 @ 2100 | | | | | |
| | | Engine torque @ speed | Nm/rpm | 910 @ 1450 | | | | 1060 @ 1200 | | | | 1785 @ 1200 | | | | | | | |
| | | Number of cylinders/displacement | cm³ | 4/5100 | | | | 6 / 7800 | | | | 6 / 11000 | | | | | | | |
| | | Alternator power/capacity | V/Ah | 24/110 | 24/110 | 24/110 | 24/110 | 24/110 | 24/110 | 24/110 | 24/110 | 24/110 | 24/110 | 24/110 | 24/110 | 24/110 | | | |
| | | Fuel consumption | L/hour | 8 | 8 | 8 | 8 | 10 | 10 | 10 | 12 | 12 | 18 | | | | | | |
| | | Fuel tank capacity | L | 210 | | 260 | | 380 | | 420 | | 580 | | | | | | | |
| | | Transmission make/model | | ZF 3WG 171 | | | | ZF 3WG211 | | | | DANA 32000 / ZF 3WG211 | | | | DANA TE30 | | | |
| | | Transmission type, function, shifting | | Hydrodynamic power shift | | | | | | | | | | | | | | | |
| | | Nr. of gears (fwd / rev) | No. | 3-3 | | | | 3-3 | | | | 4 - 4 / 3 - 3 | | | | 5-3 | | | |
| | | Power rating | kW | 171 | | | | 211 | | | | 240 / 211 | | | | 300 | | | |
| | | Drive axle make / model | | KESSLER D81 | | | | KESSLER D91 | | | | KESSLER D102 | | | | KESSLER D106 | | | |
| | | Driving brake system, type | | Oil-cooled multiple wet disc brakes | | | | | | | | | | | | | | | |
| | | Parking brake system, type | | Dry single disc / spring release | | | | | | | | | | | | | | | |
| | | Steering axle make, model | | OMCI ASF253N | | | | OMCI ASF243N | | | | OMCI ASF 233N | | | | | | | |
| | | Steering system, steer axle type | | OSCILLANT MONOCYLINDER | | | | | | | | | | | | | | | |
| 7.1-7.3 | Hydraulic system | Hydraulic pumps make | | PARKER | | | | | | | | | | | | | | | |
| | | Working pressure | bar | 220 | 220 | 220 | 220 | 220 | 230 | 230 | 230 | 230 | 250 | 250 | 250 | 250 | | | |
| | | Hydraulic oil tank capacity | L | 350 | 350 | 350 | 350 | 350 | 420 | 420 | 580 | 580 | 850 | 850 | 850 | 850 | | | |
| 8.1-8.5 | Additional | AD BLUE tank capacity | L | 25 | 25 | 25 | 25 | 25 | 25 | 25 | 25 | 45 | 45 | 45 | 45 | | | | |
| | | Batteries voltage/capacity | V/Ah | 24/160 | 24/160 | 24/160 | 24/160 | 24/160 | 24/160 | 24/160 | 24/160 | 24/160 | 24/200 | 24/200 | 24/200 | 24/200 | | | |
| | | Noise level inside cab | dB(A) | 70 | 70 | 70 | 70 | 70 | 70 | 70 | 70 | 70 | 70 | 70 | 70 | 70 | | | |
| | | Noise level outside | dB(A) | 102 | 102 | 102 | 102 | 102 | 102 | 102 | 102 | 102 | 102 | 102 | 102 | 102 | | | |
| | | Stability factor | | 1,4 | 1,4 | 1,44 | 1,44 | 1,44 | 1,44 | 1,37 | 1,38 | 1,39 | 1,40 | 1,5 | 1,5 | 1,5 | | | |



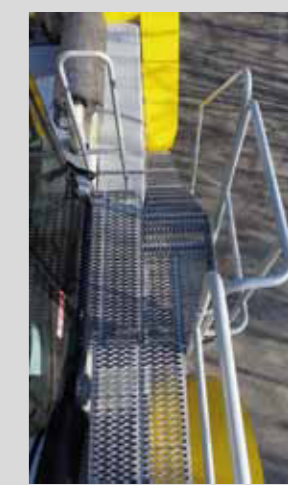
Reinforced Wheel Nut Protection



Smooth Control Levers, Actuation Buttons, Master Monitor



Rear Suspension (*option)



Safe Cabin Access



Cab Tilt Electr. Activation Pump